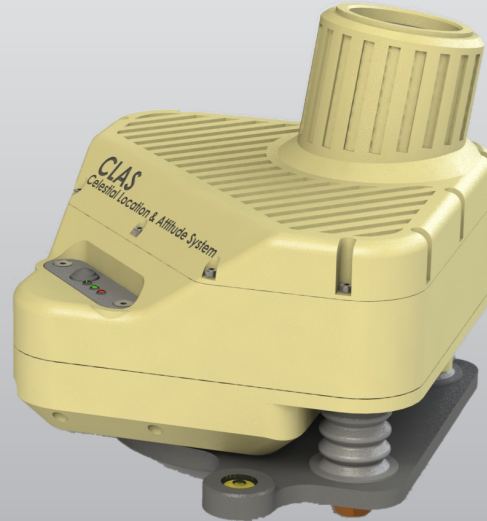


# Celestial Location & Attitude System



## Location-Finding Solution in GPS-Denied Environments

**Kearfott's Celestial Location & Attitude System (CLAS) provides a location-finding solution in GPS-denied environments, day or night, with the aid of celestial bodies.**

The CLAS is designed for ground forces use and will be ready for field demonstration in June 2021.

---

### Features & Benefits

- ✓ Location Accuracy  $\leq 100$  meters
- ✓ Location is Extracted Time  $\leq 5$  min
- ✓ Not Affected by Magnetic Field or Any Environmental Disturbances
- ✓ No Location Drift as Function of Time
- ✓ Location Can Be Displayed On User's PDA Tablet or Similar, Digital Map

# CLAS Product Specifications

<i>System Characteristics</i>	
<b>Weight</b>	≤ 4 kg (8.82 lbs.), including batteries
<b>Dimensions</b>	6.89 in x 6.89 in x 7.87 in (175 mm x 175 mm x 220 mm)
<b>Environmental</b>	MIL-STD-810E