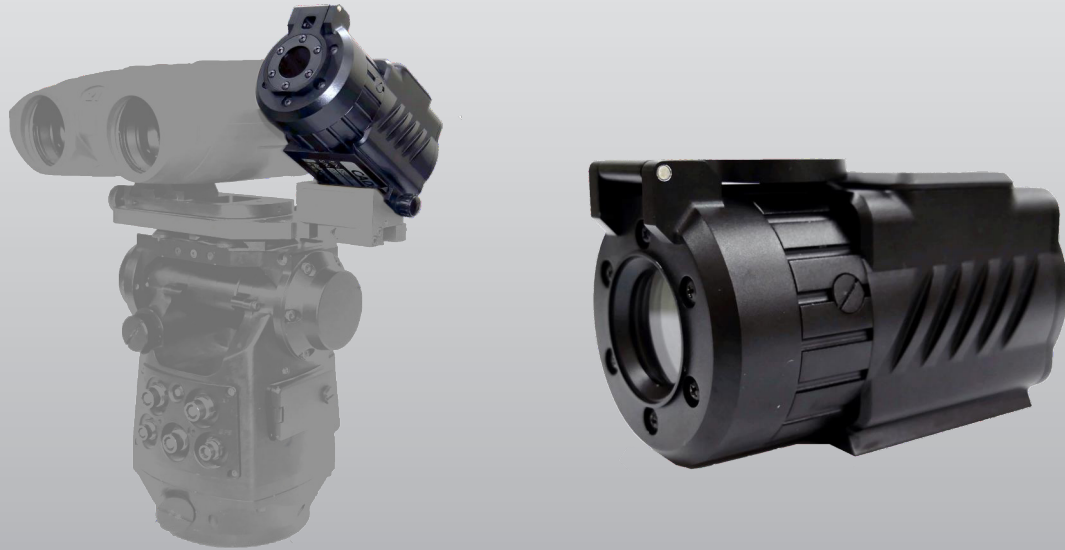


Celestial Attitude Determination System



Automated & Precise 3D Attitude Measurements

Kearfott's Celestial Attitude Determination System (CADS) enhances legacy observation and navigation systems by providing automated and precise 3D Attitude measurements (Azimuth, Pitch and Roll) within seconds of activation. The lightweight CADS is a self-contained module that incorporates a proprietary camera, computing unit, and algorithms to support day, night, urban, and obscured-sky mission scenarios.

CADS' agnostic design supports a simple integration to existing systems and requires minimal past experience for operators.

Features & Benefits

- ✓ Rapid North-Finding Improves Operational Readiness
- ✓ Eliminates Human Error
- ✓ Not Dependent on External Supporting Location Sources such as GPS Aerial Imagery

CADS Product Specifications

<i>System Characteristics</i>	
Weight	630 g (1.389 lbs.), pending configuration
Input/Output	Serial RS-232, RS-422
Power	5V (internal/external source)
<i>Accuracies - Day & Night Time</i>	
Azimuth	< 0.2 mRad
Pitch	< 0.2 mRad
Roll	< 0.2 mRad
<i>Environmental</i>	MIL-STD-810E, MIL-STD-461